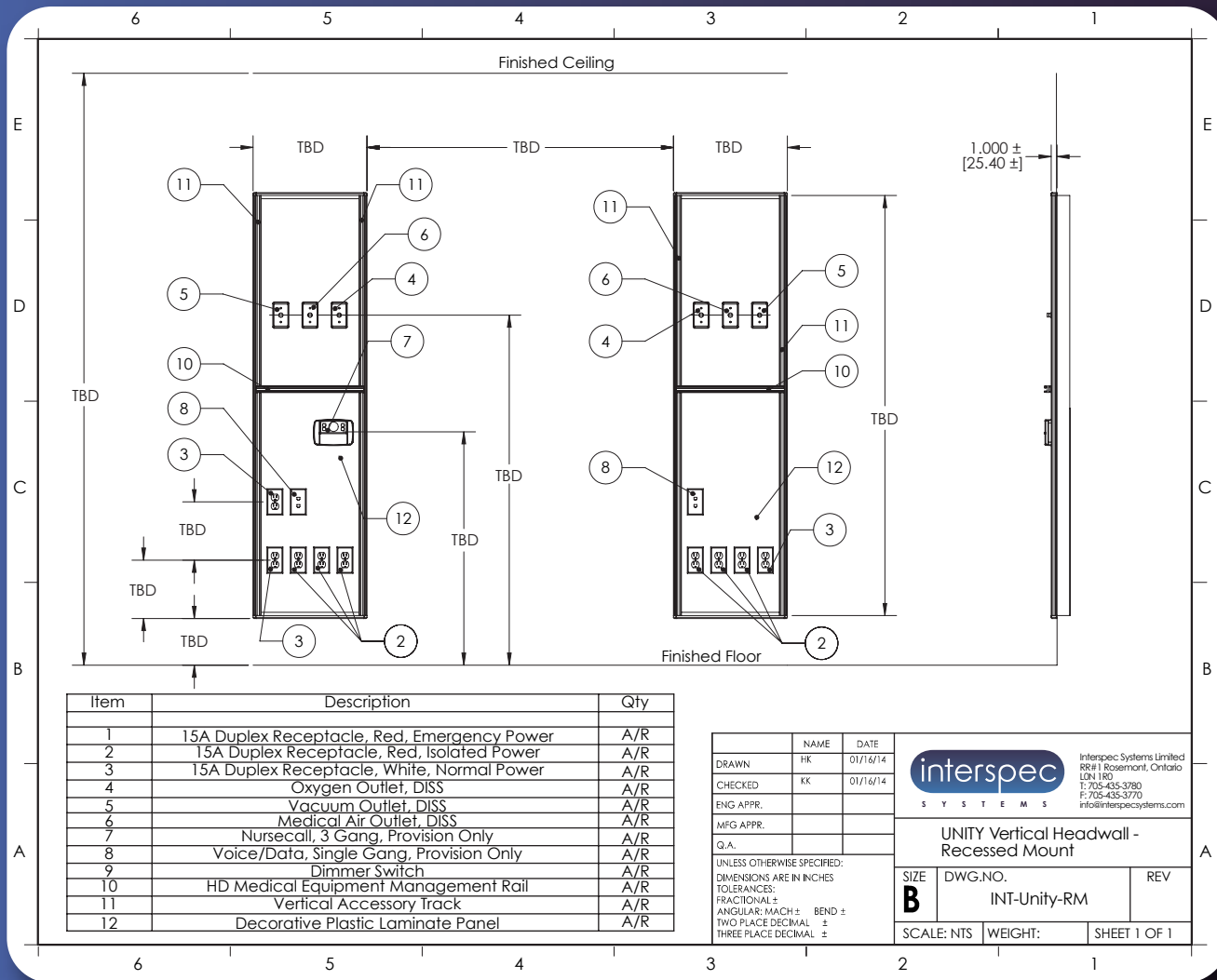


# UNITY RM



\*Due to constant product development, features and specifications are subject to change without notice. Please contact Interspec for the latest information and configurations.

...continued from inside

- **Internal Ground Bus** is included with a minimum of 8 screw fasteners. The ground bus assembly also provides a positive means for grounding the breaker enclosure.
- **Grounding Jacks** are externally accessible and are provided as required. The springloaded, solid brass receptacles are enclosed in a non-conductive housing, and are manufactured to CSA and/or NFPA 99 specifications.

- **All Interspec Headwalls** demonstrate the superior quality and functionality that comes from our many years of experience and design expertise. Interspec also provides the ultimate in customer assistance and service after the sale, and all our products are backed by the best warranty in the business. For more information, to get a quote or simply to discuss your needs, contact Interspec today.

Interspec Systems  
 995841 Mono/Adjala Townline  
 RR#1 Rosemont  
 Ontario, Canada  
 L0N 1R0

Toll free: (866) 888-8981  
 Tel: (705) 435-3780  
 Fax: (705) 435-3770  
 e.mail: info@interspecsystems.com  
 www.interspecsystems.com



INT-UNITYRM-09.08.16V1.4



RECESS MOUNTED,  
 VERTICAL HEADWALLS

SUPERIOR  
 HEADWALL  
 SYSTEMS





# UNITY RM

- 1 Resilient, easy-to-clean decorative laminate panels help reduce contaminations
- 2 Sturdy, anodized aluminum Fascia framework is virtually maintenance-free
- 3 Interspec universal vertical equipment management rails and horizontal tracks accommodate all types of accessories
- 4 Medical gas outlet stations can be placed as needed
- 5 Nurse call station and code blue terminals from other suppliers are easily installed and can be placed wherever they are required
- 6 Computer communications and monitoring receptacles can be utilized and an Interspec Systems Tilt-Swivel Monitor Bracket and slide support can also be specified
- 7 Additional, easy-to-reach power outlets can be placed wherever needed
- 8 An extensive line of convenient Interspec accessories is available to cater to almost any need and can be easily placed with our versatile mounting attachments
- 9 Heavy-duty internal frame made from 16 Gauge galvanized steel holds all wiring conduits and supply lines securely within the wall, with single-point access for ease of on-site installation

## UNITY

Recess-Mounted Vertical Headwalls can also be configured to meet other international standards and codes, ask us for more details.



Appearance of Installed Unit

**INTERSPEC UNITY RM Series** recess-mounted vertical headwall systems are custom-manufactured to fulfill the customer's specifications and objectives as laid out in the detailed shop drawings and documents prepared during our consultations in the preliminary design stage.

### BASIC CONSTRUCTION

The front fascia is constructed of extruded, satin clear anodized aluminum sections housing removable, decorative laminated aluminum panels presenting a modular, recessed wall unit. Internal conduits are factory-assembled and wired to include the specified mechanical and electrical components. The laminated aluminum fascia panels are removable allowing access to the internal components.

Internal framework and integral electrical backboxes are made from durable galvanized steel with double knockouts for easy installation of the electrical conduit runs by the on-site contractor. All internal wiring is enclosed in conduits terminating at a convenient electrical connection point and is marked, colour-coded and tie wrapped for easy circuit identification and hook-up.

Laminated aluminum cover panels are available in a wide selection of patterns and colours from several manufacturers.

SLEEK RECESS-MOUNTED VERTICAL HEADWALLS PROVIDE MAXIMUM SPACE

**UNITY recess-mounted vertical headwalls offer minimum intrusion into the work area and are an effective alternative to horizontal headwalls. More than one bed location can be serviced by a single unit and hospital staff have safe, easy access to equipment without reaching over patients. UNITY vertical headwalls are very adaptable and present a spacious, modern appearance with superior performance.**

### HEADWALL COMPONENTS

- **Medical gas outlets** are factory-installed by Interspec and checked for compliance to the specifications. All outlets and manifolds are tested in accordance with CSA Z7396.1-06 and/or NFPA 99. Singular terminal connections as specified in the drawings are provided for the primary supply line hook-ups by the mechanical contractor.
- **Power outlet receptacles** are all Hospital Grade and CSA/UL listed. The quantity and type are as specified in the final plans at the end of our design consultation.

Continued on back panel...

Contact Interspec today for specific technical information or a quote.  
Toll Free: 1(866) 888-8981 e.mail: [info@interspecsystems.com](mailto:info@interspecsystems.com)

