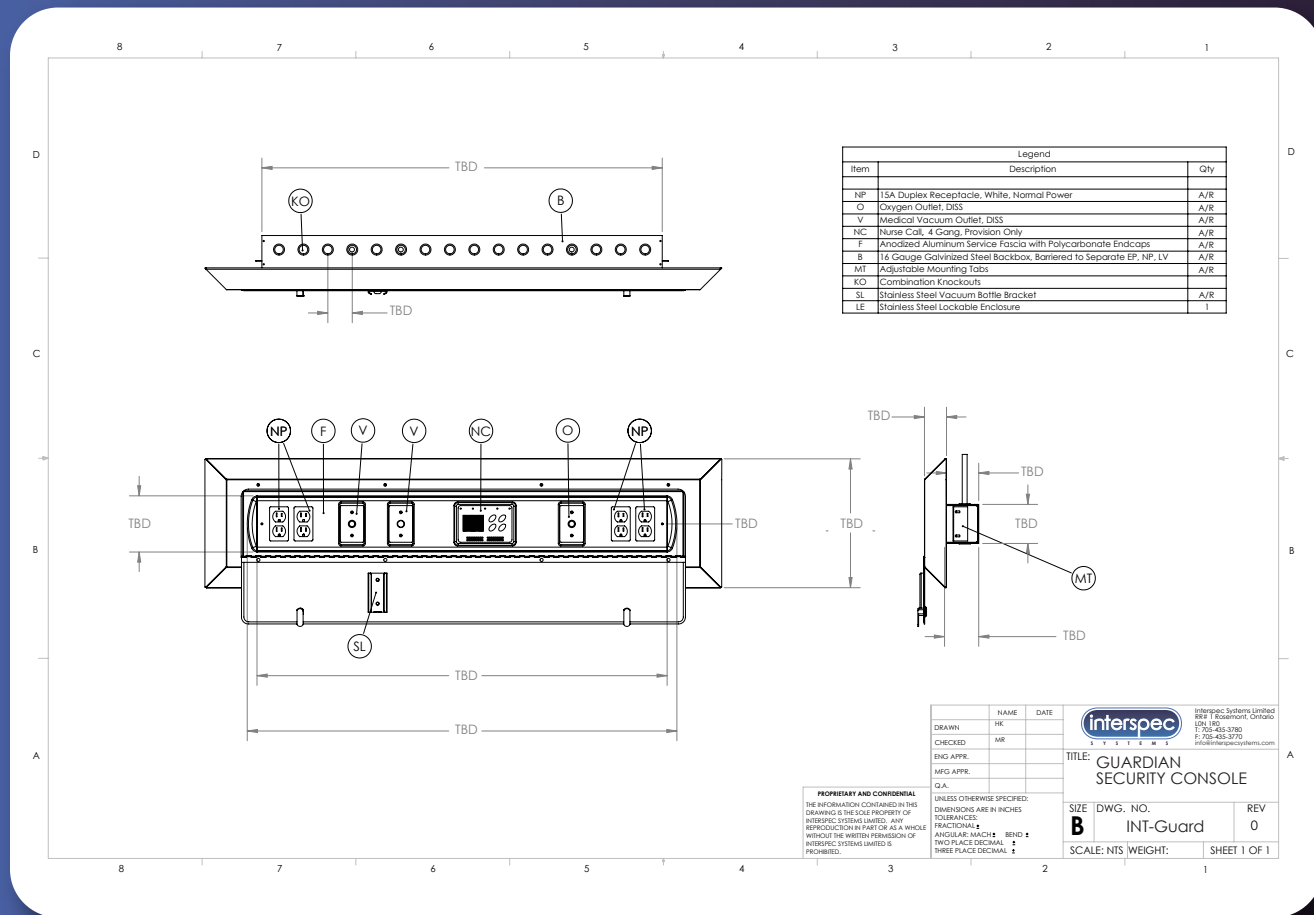


GUARDIAN



SECURITY
CONSOLE

SUPERIOR
HEADWALL
SYSTEMS



*Due to constant product development, features and specifications are subject to change without notice. Please contact Interspec for the latest information and configurations.

SECURITY CONSOLE COMPONENTS:

GUARDIAN Series Security Consoles are custom-manufactured to the specifications laid down during our design consulting phase. The designs are finalized as indicated on the supplied shop drawings and documents. Units can be adapted to accommodate any hospital's requirements.

- **A combination of knockouts** are provided on the top and bottom of the backbox to accommodate a variety of electrical connections and wiring options.
- **Power Outlet** receptacles are all Hospital Grade and CSA/UL listed. The quantity and type are as specified in the final plans.

- **Individual fixed barriers** within the backbox are pre-installed by Interspec Systems.

SECURITY CONSOLE PROVISIONS:

- **Computer Interconnects:** Computer systems provided by others can also be utilized and when requested, Interspec Systems will make a provision for the installation of the computer jack.

Contact us for more information.

GUARDIAN Series Security Consoles conveniently house medical gas and utilities while also providing a tamper-proof, lockable cover designed to limit unauthorized use. They can be configured in a variety of ways to also bring communications and power outlets to the patient's location.

BASIC CONSTRUCTION

Guardian Security Consoles feature a sturdy cover and lockable drop-down door made of heavy gauge stainless steel housing a compact and convenient wall unit. Various medical gas, air and vacuum outlet ports and electrical devices can be mounted within the console for easy access. The unit itself is semi-recessed allowing most of the components to be housed securely within the wall itself. All supplied power outlets are Hospital Grade, 2 pole, 3 wire and rated for 15 or 20 amperes, 120 volts. Due to their simple configuration, the consoles are not pre-wired, allowing maximum flexibility for on-site installation.

Continued on Back...

Interspec Systems
995841 Mono/Adjala Townline
RR#1 Rosemont
Ontario, Canada
L0N 1R0

Toll free: (866) 888-8981
Tel: (705) 435-3780
Fax: (705) 435-3770
e.mail: info@interspecsystems.com
www.interspecsystems.com

